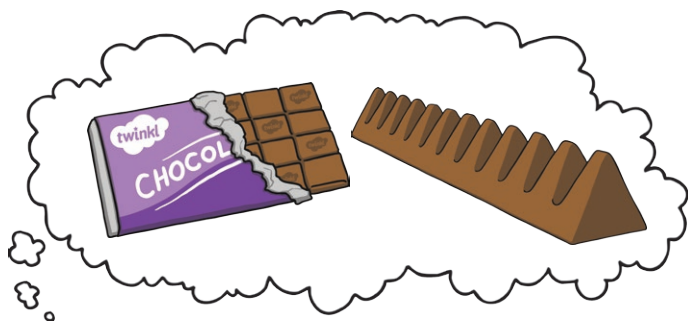
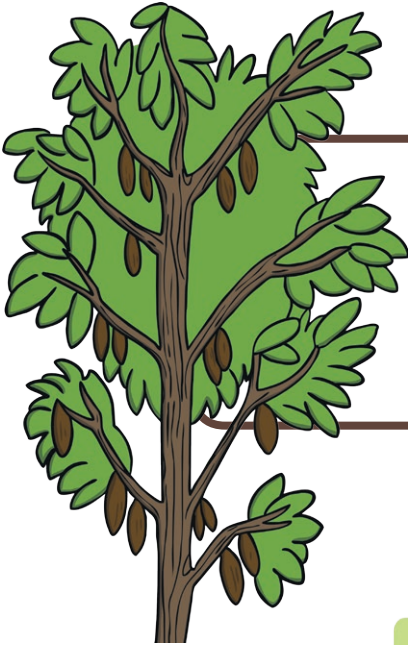


Where Does Chocolate Come From?



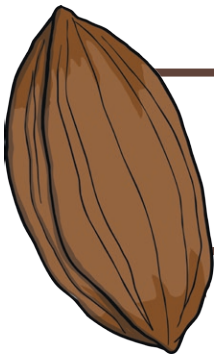
Where Does Chocolate Come From?



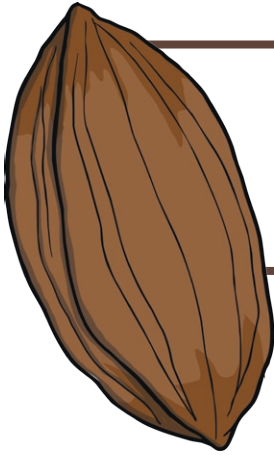
Cacao trees are grown in large plantations in tropical regions, such as in Brazil, South America.



Cocoa trees are also grown in large plantations in Ghana, West Africa.



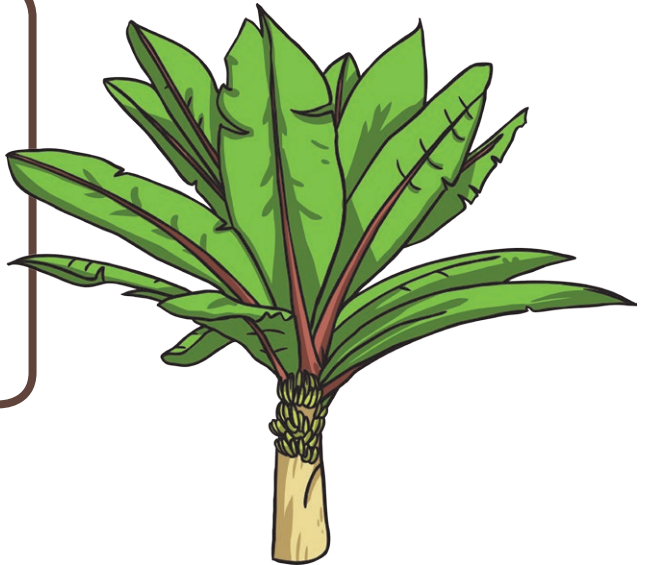
After six months, the cocoa pods are ripe and they are harvested.



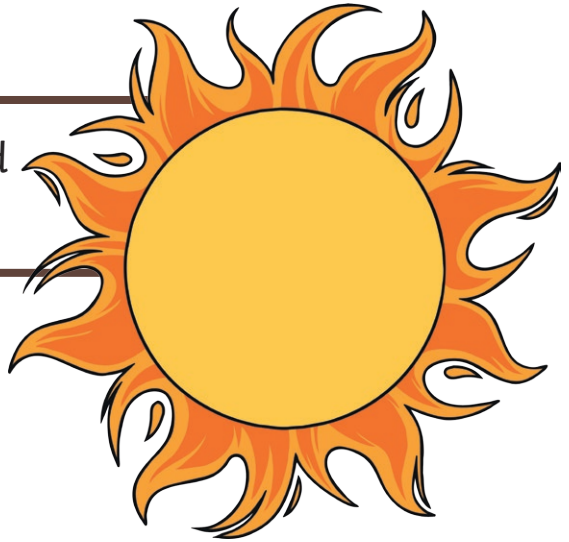
The pods are split open with a machete and the cocoa beans are removed.



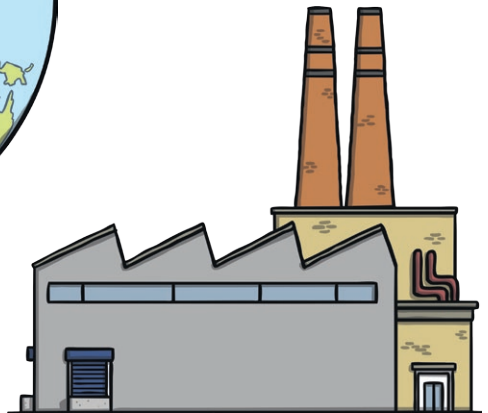
The beans are covered with banana leaves and left for 5 days to ferment.



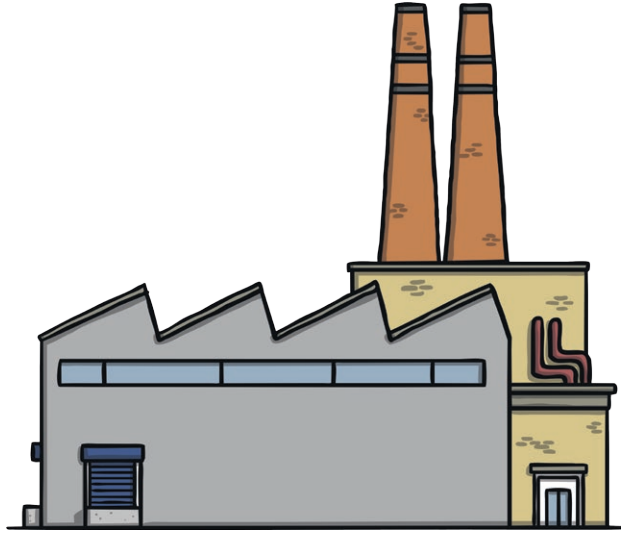
The beans are dried out in the sun.



The beans are shipped to chocolate factories all over the world.



At the factories, the beans are cleaned and then roasted.



The shells are removed and the beans are ground into a thick liquid. Other ingredients, such as sugar and cocoa butter, are added to make the chocolate taste nice.

Finally, the chocolate is packaged and sent to shops to be sold.



Now can you write the process in your own words?
